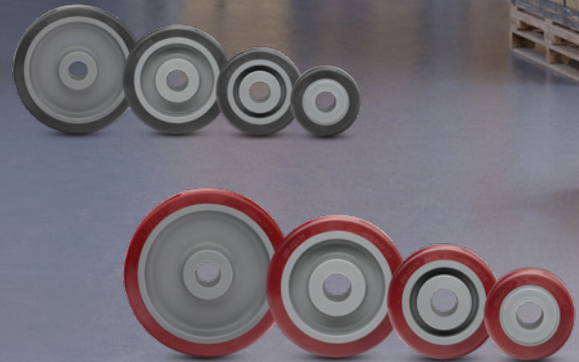




# Colson Group Polyurethane **HI-TECH** **NEXT GEN**



## Next Generation Moldon Polyurethane Hi-Tech Wheels

### Elevate Your Moldon Polyurethane Wheel Lineup: Boosted Capacity, Extended Life, and Enhanced Ergonomics\*

For over 40 years, the Moldon Polyurethane HI-TECH wheel has been the premier choice for multi-purpose caster wheels. Proudly made in the USA, these wheels have undergone significant enhancements, including a solid, reinforced hub for greater impact resistance and a 20% increase in capacity. The streamlined core design reduces the potential for debris buildup, making it excellent for food service and healthcare applications. ICWM testing shows that the improved design can deliver up to 4 times better life expectancy. Additionally, experience significantly better ergonomic performance for easier initial roll start and swivel. Be confident in its quality, with unmatched performance and durability backed by a 3-year warranty.



**ALBION**

*Featured on 120, 110, 170 and 18 Series kinpinless casters along with 16 and 72 series kingpin casters.*



**COLSON**

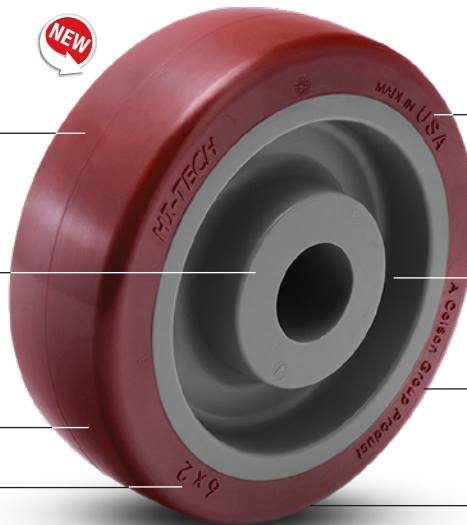
*Featured on 4 and 6 Series casters along with stainless steel Defender D4 Series*

**Cost saving opportunity:**  
*Fewer replacements needed with up to 4x longer life expectancy*

**Heavier Loads:**  
*Thicker, sturdier hub with greater impact strength and 20% increased capacity*

**Safety:**  
*Reduce the risk of injuries and facilitate easier operation with a 20% improvement in ergonomics.*

**Traditional maroon tread color**



**Made in the USA**

**Clean:**  
*Streamlined core design helps prevent debris buildup and is easier to clean (Excellent for food service and healthcare applications)*

**Protect:**  
*Protects floors with non-marking material and rejects debris*

**Antimicrobial option**  
*(grey tread is easily distinguished)*



\*Testing completed using Institute of Caster and Wheel Manufacturers (ICWM) parameters comparing Standard to Enhanced GEN 2 design.



# Colson Group Polyurethane **HITECH**

# NEXT GEN

Industrial strength polyurethane tread is molded to a interlocking “ridged” polyolefin core. This design adds strength for loads subjected to shock and hard impacts. Tread is molded in, around and through a ribbed extension of the core to prevent debonding. **Not recommended for conditions of continuous operation such as tow-line, etc.**



**Temperature Range:** -45°F to +180°F. • **Hardness:** 55(±5) Durometer Shore D scale.



Wheel Dia.	Tread Width	Load Capacity (lbs)	Bearing Bore	Bore Less Bearing	Hub Length	Bearing	Colson Number	Albion Number
------------	-------------	---------------------	--------------	-------------------	------------	---------	---------------	---------------

### Maroon Moldon Polyurethane HI-TECH on Polyolefin Core

4"	2"	720	3/4"	1 3/16"	2 3/16"	Delrin	5.00004.921	XM0425112
			3/4"	1 3/16"	2 3/16"	Roller	5.00004.929	XM0420112
			1/2"	1 3/16"	2 3/16"	Pedestal Precision Ball	5.00004.925	XM0422908
			—	1 3/16"	2 3/16"	No Bearing	5.00004.926	5.00004.926
5"	2"	900	3/4"	1 3/16"	2 3/16"	Delrin	5.00005.921	XM0525112
			3/4"	1 3/16"	2 3/16"	Roller	5.00005.929	XM0520112
			1/2"	1 3/16"	2 3/16"	Pedestal Precision Ball	5.00005.925	XM0522908
			—	1 3/16"	2 3/16"	No Bearing	5.00005.926	5.00005.926
6"	2"	1100	3/4"	1 3/16"	2 3/16"	Delrin	5.00006.921	XM0625112
			3/4"	1 3/16"	2 3/16"	Roller	5.00006.929	XM0620112
			1/2"	1 3/16"	2 3/16"	Pedestal Precision Ball	5.00006.925	XM0622908
			—	1 3/16"	2 3/16"	No Bearing	5.00006.926	5.00006.926
8"	2"	1200	3/4"	1 3/16"	2 3/16"	Delrin	5.00008.921	XM0825112
			3/4"	1 3/16"	2 3/16"	Roller	5.00008.929	XM0820112
			1/2"	1 3/16"	2 3/16"	Pedestal Precision Ball	5.00008.925	XM0822908
			—	1 3/16"	2 3/16"	No Bearing	5.00008.926	5.00008.926

### Antimicrobial Grey Moldon Polyurethane HI-TECH on Polyolefin Core

4"	2"	720	3/4"	1 3/16"	2 3/16"	Delrin	5.00004.921G	XA0425112
			3/4"	1 3/16"	2 3/16"	Roller	5.00004.929G	XA0420112
			1/2"	1 3/16"	2 3/16"	Pedestal Precision Ball	5.00004.925G	XA0422908G
			—	1 3/16"	2 3/16"	No Bearing	5.00004.926G	5.00004.926G
5"	2"	900	3/4"	1 3/16"	2 3/16"	Delrin	5.00005.921G	XA0525112
			3/4"	1 3/16"	2 3/16"	Roller	5.00005.929G	XA0520112
			1/2"	1 3/16"	2 3/16"	Pedestal Precision Ball	5.00005.925G	XA0522908
			—	1 3/16"	2 3/16"	No Bearing	5.00005.926G	5.00005.926G
6"	2"	1100	3/4"	1 3/16"	2 3/16"	Delrin	5.00006.921G	XA0625112
			3/4"	1 3/16"	2 3/16"	Roller	5.00006.929G	XA0620112
			1/2"	1 3/16"	2 3/16"	Pedestal Precision Ball	5.00006.925G	XA0622908
			—	1 3/16"	2 3/16"	No Bearing	5.00006.926G	5.00006.926G
8"	2"	1200	3/4"	1 3/16"	2 3/16"	Delrin	5.00008.921G	XA0825112
			3/4"	1 3/16"	2 3/16"	Roller	5.00008.929G	XA0820112
			1/2"	1 3/16"	2 3/16"	Pedestal Precision Ball	5.00008.925G	XA0822908
			—	1 3/16"	2 3/16"	No Bearing	5.00008.926G	5.00008.926G

Consult factory for other color, bearing, washer and bushing options. Minimum order quantities may apply.



Red on black excellent replacement for Faultless and many other models. To order add "4" to end of model (Example: 5.0004.9264.



Blue on black excellent replacement for Eagle wheels. To order add "5" to end of model (Example: 5.0004.9265.

[www.colsongroupusa.com](http://www.colsongroupusa.com) • 800-253-0868 • Available on these trusted caster brands:

